



READ THE RETURN ON ENVIRONMENT REPORT // [PA.AUDUBON.ORG/ROE](https://pa.audubon.org/roe)

// RETURN ON
ENVIRONMENT
FACT SHEET

East Coventry Township 2021

Louisiana Waterthrush / Kenneth Cole Schneider



\$8.2 MILLION
ANNUAL COST SAVINGS BENEFITS
PROVIDED BY NATURE

Ellis Woods / Kelly McGinley



\$6.6 MILLION
ANNUAL OUTDOOR RECREATION
REVENUE



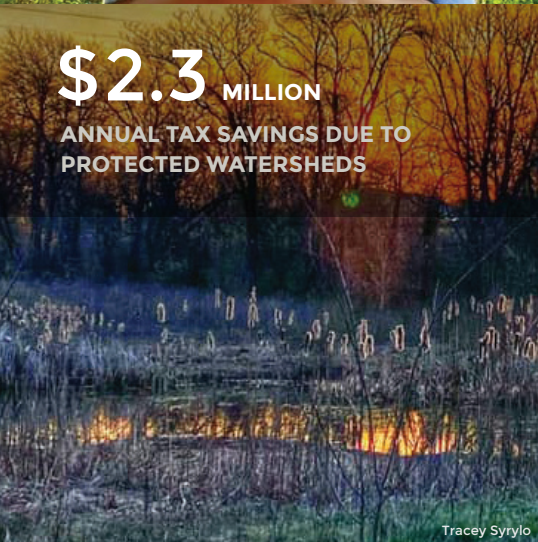
Karen Phillips Bretz

WE CAN'T AFFORD NOT TO PROTECT

EAST COVENTRY TOWNSHIP'S OPEN SPACES.

East Coventry Township supplies our communities with sparkling clean drinking water, critical wildlife habitats, flood protection, and impressive recreational and tourism opportunities. The East Coventry Township Return on Environment study demonstrates how open space is integral to East Coventry Township's economy, health, sense of place, and cost of living. By understanding nature's financial value, communities are better equipped to strike an effective balance between protecting natural resources and supporting smart growth.

\$2.3 MILLION
ANNUAL TAX SAVINGS DUE TO
PROTECTED WATERSHEDS



Tracey Syrylo

\$3.3 MILLION
ANNUAL SAVINGS IN REDUCED
HEALTHCARE COSTS



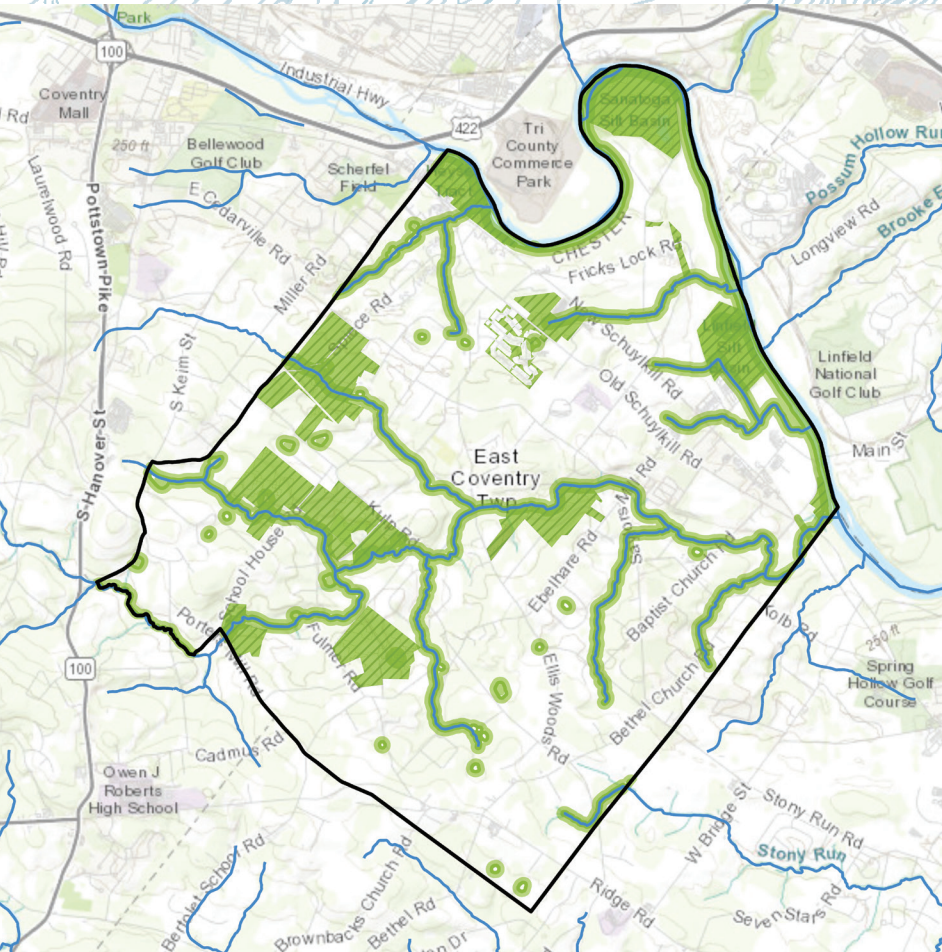
Eric Forberger



Ellis Woods / Kelly McGinley



READ THE RETURN ON ENVIRONMENT REPORT // [PA.AUDUBON.ORG/ROE](https://pa.audubon.org/roe)



INCREASING OUR RETURN ON ENVIRONMENT

Green Ribbon Landscapes—areas where large, native forests and grassland habitats connect with trails, parks and green, open space—provide the highest environmental health, biological diversity, and economic sustainability.

 GREEN RIBBON LANDSCAPES

 WATERWAYS

 PROTECTED OPEN SPACE

MAKING THE BEST USE OF ALL

RESOURCES IN WAYS THAT

STEWARD THE ENVIRONMENT,

RESPECT HUMAN AND FINANCIAL

CAPACITY, AND PROVIDE A LEGACY

FOR FUTURE GENERATIONS IS VITAL.

— OPEN SPACE, RECREATION, AND ENVIRONMENTAL RESOURCES PLAN

GO NATIVE

Native plant species ensure ecological sustainability, diminish pests, and support local wildlife.

- // Remove invasive plant species, and replace lawns with native flowers, shrubs, and trees.
- // Improve stormwater absorption by creating rain gardens and reducing paved surfaces.
- // Make a brush pile of downed leaves and branches to provide food and shelter for wildlife.

GROW TOGETHER

Connected healthy habitats protect water sources, improve air quality, and benefit the community.

- // Share photos of your native garden and local wildlife on social media and community websites.
- // Organize a neighborhood landscape challenge or community native plant and seed swap.
- // Limit mowing along waterways to reduce erosion and support clean water for the community.

GET INVOLVED

Awareness, inspiration, and action will lead to better policies for environmental protection.

- // Support local conservation efforts to protect open spaces and watershed wildlife corridors.
- // Promote the use of native plants in parks, trails, community gardens, and public spaces.
- // Join the East Coventry Parks and Recreation team and be a steward of the land.

LEARN MORE // [PA.AUDUBON.ORG/BFC](https://pa.audubon.org/bfc)

GET INVOLVED TODAY // [EASTCOVENTRY-PA.GOV](https://eastcoventry-pa.gov)