

// RETURN ON
ENVIRONMENT
FACT SHEET

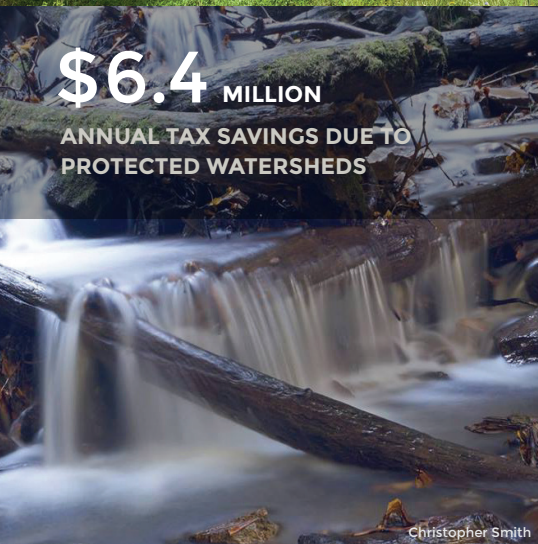
Robeson Township 2021

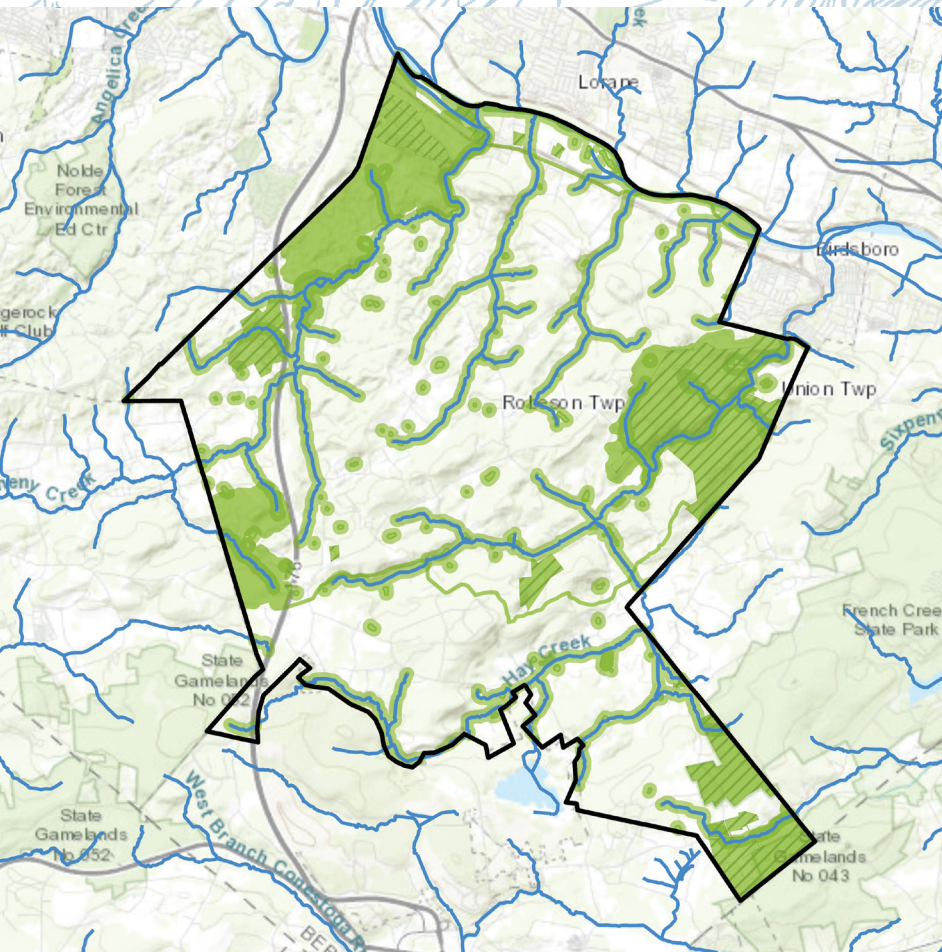


WE CAN'T AFFORD NOT TO PROTECT

ROBESON TOWNSHIP'S OPEN SPACES.

Robeson Township supplies our communities with sparkling clean drinking water, critical wildlife habitats, flood protection, and impressive recreational and tourism opportunities. The Robeson Township Return on Environment study demonstrates how open space is integral to Robeson Township's economy, health, sense of place, and cost of living. By understanding nature's financial value, communities are better equipped to strike an effective balance between protecting natural resources and supporting smart growth.





INCREASING OUR RETURN ON ENVIRONMENT

Green Ribbon Landscapes – areas where large, native forests and grassland habitats connect with trails, parks and green, open space – provide the highest environmental health, biological diversity, and economic sustainability.

- GREEN RIBBON LANDSCAPES
- WATERWAYS
- ▨ PROTECTED OPEN SPACE

EVERY DECISION MADE BY OUR
MUNICIPALITY MUST INCLUDE
CONSIDERATION FOR HOW IT WILL
AFFECT OUR DESCENDANTS SEVEN
GENERATIONS INTO THE FUTURE. IF THIS
IS DONE, CLEAN AIR, CLEAN WATER,
AND BIODIVERSITY WILL BE SAVED.

– CHRISTOPHER SMITH, CHAIRMAN, ROBESON TWP BOARD OF SUPERVISORS

🌲 GO NATIVE

Native plant species ensure ecological sustainability, diminish pests, and support local wildlife.

- // Remove invasive plant species, and replace lawns with native flowers, shrubs, and trees.
- // Improve stormwater absorption by creating rain gardens and reducing paved surfaces.
- // Make a brush pile of downed leaves and branches to provide food and shelter for wildlife.

🌱 GROW TOGETHER

Connected healthy habitats protect water sources, improve air quality, and benefit the community.

- // Share photos of your native garden and local wildlife on social media and community websites.
- // Organize a neighborhood landscape challenge or community native plant and seed swap.
- // Limit mowing along waterways to reduce erosion and support clean water for the community.

🔄 GET INVOLVED

Awareness, inspiration, and action will lead to better policies for environmental protection.

- // Support local conservation efforts to protect open spaces and watershed wildlife corridors.
- // Promote the use of native plants in parks, trails, community gardens, and public spaces.
- // Join the Robeson Township EAC, local land trust, or watershed association.