



READ THE RETURN ON ENVIRONMENT REPORT // [PA.AUDUBON.ORG/ROE](https://pa.audubon.org/roe)

// RETURN ON
ENVIRONMENT
FACT SHEET

Union Township 2021

Northern Rough-winged Swallow / Lynn Cleveland

\$35.3 MILLION

ANNUAL COST SAVINGS BENEFITS
PROVIDED BY NATURE

\$6.3 MILLION

ANNUAL OUTDOOR RECREATION
REVENUE

WE CAN'T AFFORD NOT TO PROTECT

UNION TOWNSHIP'S OPEN SPACES.

Union Township supplies our communities with clean drinking water, critical wildlife habitats, flood protection, and impressive recreational and tourism opportunities. The Union Township Return on Environment study demonstrates how open space is integral to Union Township's economy, health, sense of place, and cost of living. By understanding nature's financial value, communities are better equipped to strike an effective balance between protecting natural resources and supporting smart growth.

\$4.8 MILLION

ANNUAL TAX SAVINGS DUE TO
PROTECTED WATERSHEDS

\$2.1 MILLION

ANNUAL SAVINGS IN REDUCED
HEALTHCARE COSTS

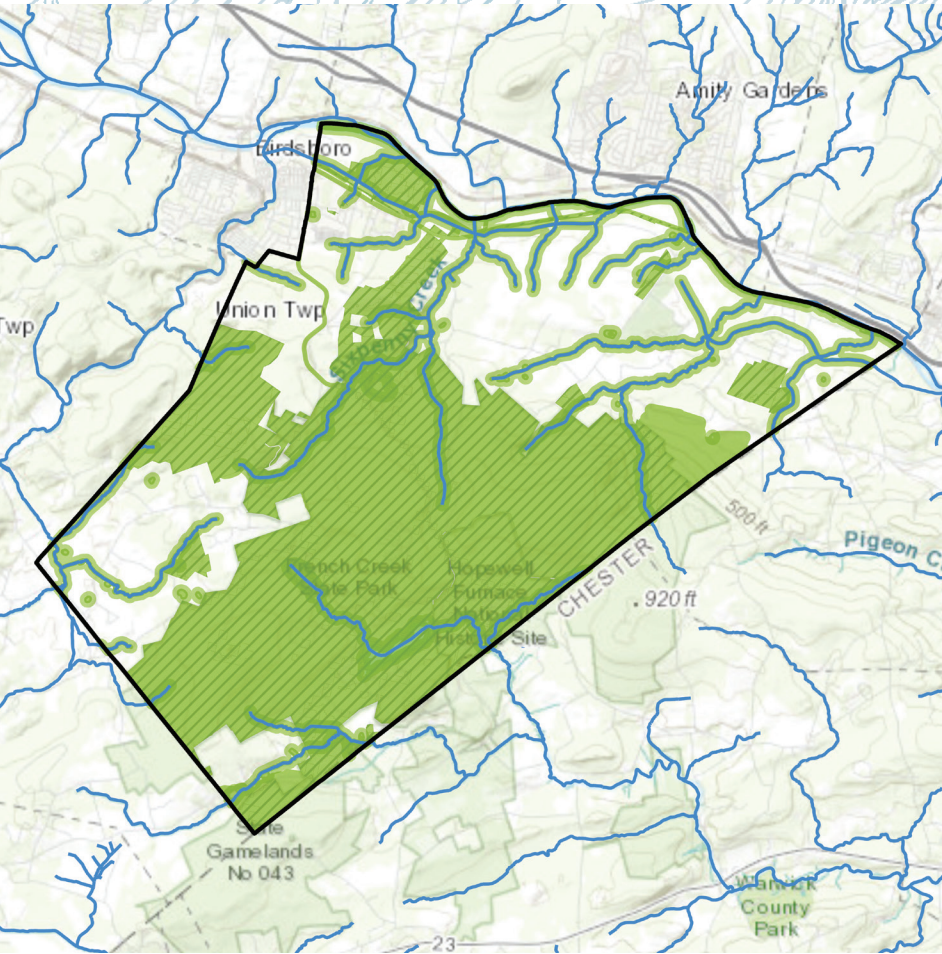
Hopewell Lake / JM DeLacy

Regan Moll-Dohm

Regan Moll-Dohm





READ THE RETURN ON ENVIRONMENT REPORT // [PA.AUDUBON.ORG/ROE](https://pa.audubon.org/roe)



INCREASING OUR RETURN ON ENVIRONMENT

Green Ribbon Landscapes—areas where large, native forests and grassland habitats connect with trails, parks and green, open space—provide the highest environmental health, biological diversity, and economic sustainability.

-  GREEN RIBBON LANDSCAPES
-  WATERWAYS
-  PROTECTED OPEN SPACE

NATURAL RESOURCES PROVIDE
SCENERY AND IMPORTANT
FLORA AND FAUNA HABITAT
WHICH GIVE THE COMMUNITY
ITS OWN IDENTITY.

— SOUTHERN BERKS JOINT COMPREHENSIVE PLAN, 2020

GO NATIVE

Native plant species ensure ecological sustainability, diminish pests, and support local wildlife.

- // Remove invasive plant species, and replace lawns with native flowers, shrubs, and trees.
- // Improve stormwater absorption by creating rain gardens and reducing paved surfaces.
- // Make a brush pile of downed leaves and branches to provide food and shelter for wildlife.

GROW TOGETHER

Connected healthy habitats protect water sources, improve air quality, and benefit the community.

- // Share photos of your native garden and local wildlife on social media and community websites.
- // Organize a neighborhood landscape challenge or community native plant and seed swap.
- // Limit mowing along waterways to reduce erosion and support clean water for the community.

GET INVOLVED

Awareness, inspiration, and action will lead to better policies for environmental protection.

- // Support local conservation efforts to protect open spaces and watershed wildlife corridors.
- // Promote the use of native plants in parks, trails, community gardens, and public spaces.
- // Join the Union Township EAC, local land trust, or watershed association.

LEARN MORE // [PA.AUDUBON.ORG/BFC](https://pa.audubon.org/BFC)

GET INVOLVED TODAY // [UNIONBERKS.ORG](https://unionberks.org)